



**AUCTIONS...  
PRIVATE SALES...  
APPRAISALS**

# Cannon

## Sales Inc.

[www.cannonsalesinc.com](http://www.cannonsalesinc.com)



**EXPERIENCE...  
INTEGRITY...  
RESULTS!**

REV. 3/6/12

# AVAILABLE IMMEDIATELY FOR PRIVATE SALE!!



**'09 DICKIRSON WELL SERVICE RIG**



**SHAFFER SOS 6000**



**OIME SL-9**



**FRANKS 658 WELL SERVICE RIG**

### DRILLING/WELL SERVICE RIGS

**OIME SL-9 S/D Drwks** 1500 H.P. LEBUS Grooved f/ 1-1/4" Line, Driller's Console, PARMAC 342 Hydromatic Brake, p/b (3) CAT C-18 Diesel Engs., w/ ALLISON Trans, OIME Catworks Rotary Drive Unit.

**PYRAMID** 146'H x 23'W, 815,000# SHL Mast w/ PYRAMID 22.5'H Swing Up Substructure w/V-Door & Catwalk

(1) CAT 600 KW Gen Set p/b CAT 3412 (1) CAT 545 KW Gen Set p/b CAT C-18, GD Air Compressor Mtd in Gen House, Spare CAT 600 KW Gen Set p/b CAT 3412

**SKYTOP BREWSTER B-1300T**, 1300 H.P. Triplex p/b CAT 3512; **OILWELL PT-1100-A**, 1100 H.P. Triplex p/b CAT 3508

**HACKER PYRAMID 275** Rotary Table; **NATIONAL 500** Ton Swivel; 5-1/4" Hex Kelly w/ Drive Bushing & Hyd. Kelly Spinner; **SENTRY 350-Ton** Block/Hook Combo

**HYDRILL GK11**, 10M Annular BOP, **CAMERON** Type U, 11", 10M Dbl. BOP, 6-Station Closing Unit; **CAMERON** Choke Manifold w/ Super Choke

**ALBERTA** 12'W x 54'L Office/Pusher House; 8'W x 38'L Drillers House; 10'W x 48'L Parts/Change House; 12'W x 40'L Mud House w/ (5) 5x8 Cent Pumps

(3) Pit 1800 Bbl Mud System Complete w/(8) Mud Agitators, (5) 5x6 Cent Pumps, Radicon Mud Mixers, (2) Linear Shale Shakers, SWACO Desander & Desilter

10'W x 40'L 400 Bbl. Water Tank; 8'W x 33'L 12,300 Gallon Fuel Tank

Hyd. Pipe Spinner, Hyd. Winches, Air Winch, Elevators, Slips, Elevator Links, Hand Tools, Power Tools, TOTCO 700,000# Weight Indicator & Misc. Rig Parts & Wind Walls (Note: Rig is Currently Drilling)

**SHAFFER SOS 6000 S/D Drwks** p/b (2) DETROIT Series 60, 475 HP Diesel Engs w/ Twin Disc Torques, 2 Engs In-Line Compound

102'H x 12'6"W Lee C. Moore Type Mast; 7'H x 14'W x 40'L Box-Type Substructure w/ 4'H x 14'W x 40'L Pony Sub, 40'L Catwalk/Drill Collar Box

190 KW Gen Set p/b John Deere 6.8 Liter Diesel Eng, 140 KW Get Set p/b CAT 3306 Diesel Eng, Mtd on 7'6"W x 28'L Gen House

(2) Ellis Williams 15W600 Duplex Pumps, Ea. p/b CAT D379 Diesel Eng

**IDECO 17-1/2" x 44"** Rotary Table; **SKYTOP BREWSTER 45X 150** Ton Swivel; 4-1/4" Square Kelly; 150-Ton 4 Sheave Block/Hook Combo; **REGAN** Bladder Type BOP

8'W x 27'L Drillers House w/ Knowledge Box, Lockers, Heater, Satellite Auto Driller; **MARTIN-DECKER 400,000#** Weight Indicator; **EASTMAN 6** Degree Straight Hole Instrument, **EASTMAN** Whipstock Star Recorder

2-Pit 500 Bbl Mud System, Kim Tron Shale Shaker

750 Bbl Water Tank w/ Drillers House Support; 6000 Gal Fuel Tank, Skidded

Tong, Elevators, Slips D.C Clamp & All Tools For Running Rig

(20) 6" to 6-1/4" Drill Collars w/ 4-1/2"XH Conns; 6479" (209 JTS) 4-1/2" Grade E, 16.60# R-2 Drill Pipe w/ 4-1/2"XH Conns (**Note: Double White Band, Drilled Less Than 3000' Some Unused**) This Rig Last Drilled Nov. 1, 2011 and is Very Well Maintained!!!

**FRANKS/CABOT 1977 EXPLORER III SERIES 750** S/D Back-In Drilling/Well Service Unit, p/b DETROIT Series 60 Diesel Eng, ALLISON CLT-6061 Trans, PARMAC 22" Brake, CABOT 112'H x 300,000# Hyd. Raised & Scoped Mast, MCKISSICK 150-Ton Block w/ HYDRA Hook, Mtd. on 6 Axle Carrier w/ 15' Substructure, Elevated Rotary Drive Box, Mud Boat, V-Door, Catwalk

### FOAM UNIT/MUD PUMP

**2000# FOAM UNIT** w/ 2000 PSI Joy Booster p/b DETROIT 8V92T Diesel Eng., 1350 QUINCY Compressor p/b DETROIT 12V92T Diesel Eng., w/ P0172 GARDNER DENVER Triplex Pump w/ Hyd. Power, 50 Bbl Tank w/ HALLIBURTON Flow Meters, Control Panel, All Mtd. & Unitized on T/A Drop Deck Trailer

**OILWELL 214P** p/b DETROIT SERIES 60

**CONTACT RICK RUSSELL @ 940-841-3428**  
[russell@cannonsalesinc.com](mailto:russell@cannonsalesinc.com)  
 6601 SW 29TH STREET • OKC, OK 73179



### COMPLETE WELL SERVICING COMPANY FOR SALE!!

**CONTACT RICK RUSSELL @ 940-841-3428**

### OIL & GAS DRILLING COMPANY FOR SALE INCLUDING ALL SURPLUS EQUIPMENT & REAL ESTATE!!!

**CONTACT RICK RUSSELL @ 940-841-3428**

### COMPLETE WATER TRANSFER COMPANY FOR SALE!!

**CONTACT RICK RUSSELL @ 940-841-3428**



**LEE C. MOORE DERRICK**



**NAT 50CA COMPLETE DRWKS**



**CAMERON 5000# BOP**

### DRILLING/WELL SERVICE RIGS

**SPENCER HARRIS 7000**

**UNIT U-15**, All Equipment Necessary to Make Complete Rig

**IDECO HYDRAIR H-35** D/D Drwks, All Equipment Necessary to Make Complete Rig

**NORTH TEXAS U-15**, All Equipment Necessary to Make Complete Rig

**MID-CONTINENT U-34**, All Equipment Necessary to Make Complete Rig

**BREWSTER N-3**, All Equipment Necessary to Make Complete Rig

**NAT 50CA DRWKS**, 2 Eng Compound w/ Power

**FRANKS 1287** Well Service Rig

**FRANKS 658** Well Service Rig

**1991 KREMCO 600 D/D** Well Service Rig

**2009 DICKIRSON**, SR80 Well Service Rig

### SWAB UNITS/ROLLING STOCK

**FRANKS CABOT SWAB UNIT & 1969 SKYTOP SWAB UNIT**

**1996 KENWORTH** T/A Rig Up Truck, p/b CUMMINS 350 Diesel Eng, 355"WB, Poles, 2 Winches

### PUMPS/CHOKES/GEN HOUSES/MISC EQUIPMENT

**CHOKES MANIFOLD**, 14 Valve, 3-1/8", 5000#, Mfg Quality Oil Tools, (UNUSED); (4) **GARDNER-DENVER PZ-9's** p/b CAT 398, Skidded Triplex Pumps, (2) w/No Power; **OILWELL 46P** Triplex Plunger Pump, 4-1/2" x 6"; (2) **AMERMAN GA-750** DUPLEX PUMPS, (Rebuilt Fluid Ends), 7-1/4 x 16, No Power, Skidded; (1) **AMERMAN GA-750** DUPLEX PUMP, 7-1/4 x 16, p/b CAT 379, Skidded; (1) **NATIONAL K500** DUPLEX PUMP, 7-1/4 x16, Hydrill K-20 Pulsation Damper, Skidded; (4) **GENERATOR HOUSES**, (3) w/ 210 KW Gen p/b CAT 3306, (1) w/ 310 KW Gen p/b Cat C15; **3-PIT MUD SYSTEM**; **CAMERON SPACESAVER**, 5000# Double BOP; **16" Double Fawick** Clutch & Drive Assembly; **WELL SERVICE TOOLS (UNUSED)**

### DERRICK/DRILL COLLARS/DRILL PIPE

**LEE C MOORE DERRICK**, 142', 25' Base, 6 Sheave, 12 Lines, 703,000#, S/N 3213; (66) **4-3/4" DRILL COLLARS**, XH Connections; **DRILL PIPE**, 3-1/2", 4-1/2", 5" DWB & YB; **PIPE TUBS**



**GARDNER DENVER PZ9 TRIPLEX PUMPS**

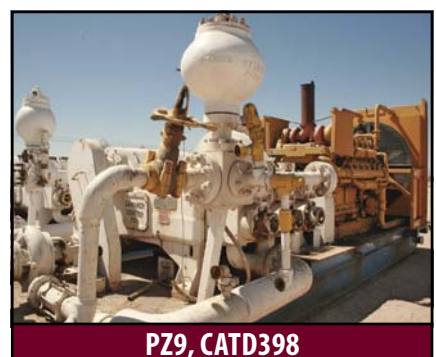
**CONTACT SCOTT ADKINS @ 432-563-3900**  
[sadkins@cannonsalesinc.com](mailto:sadkins@cannonsalesinc.com)  
 3720 SOUTH CR 1309 • ODESSA, TX 79765



**GENERATOR HOUSE**



**KENWORTH RIG UP TRUCK**



**PZ9, CATD398**

### DRILLING RIGS

**2006 CAMERON** 600 HP Carrier-Mtd, Top Drive, Drilling Rig p/b DETROIT Series 60 630 HP Diesel, ALLISON M5610 Auto Trans, CAMERON D/D Drwks, Grooved f/1-1/8" Line, RWI 112'H 410,000# Tubular Steel Telescoping Mast; 17'H x 25'W x 25'L Sub w/Foldout Wings, 400,000# Setback Capacity, Hyd Scopes up/Down to 10'6"H x 13'6" on Lowboy; Drill Pipe & Collars

**FRANKS 658** Well Service Rig on Carrier, p/b 12V71-N 500 DETROIT Eng, New Drill Line in 2010, Swab Drum has 8000' of 9/16 Line, Derrick is 102', Four Legged Franks w/ 100 Ton

McKissick Block, Ready to Work

**5000' RIG**, Air Driller's Console, WILSON Torcair Single Drum Drwks, p/b DETROIT 8V Eng, SPENCER HARRIS 97' Telescoping Mast, Hydraulically Raised, Mtd on 3-Axle Lowboy, WEB WILSON Pump and GARDNER DENVER Pump, both p/b DETROIT Diesel Engs, Approx. 4000' of 31/2" IF Drill Pipe

### ROLLING STOCK

**1996 FREIGHTLINER; 2000 FREIGHTLINER; 1962 INT'L** Water Well Rig

(2) **LUFKIN** T/A Equipment Trailers; **2007 FORD** F-150 Pickup; **2002 FORD** F-250 Pickup; **2001 FORD** F-250 Pickup; **LORAIN** 75-Ton Crane; **ARIEL** 2-Stage Gas Compressor, 1237# Working Pressure; **ARIEL** Single Stage Compressor

### NEW PUMPS

(2) **ELLIS-WILLIAMS E-800** Triplex Pumps, Ea p/b CAT 3412 800 HP Diesel Eng, ALLISON 6610 Electronic Trans, Ea Mtd on KAUFMAN Drop Deck T/A Trailer, 235/75R17.5 Tires (**Both New**)

### DRILL PIPE

57,907' of 4" S-135 15.70# New Drill Pipe with, TSDS38 (Double Shoulder-High Torque 3 1/2" IF) Connections, 5" O.D. x 2 9/16" I.D., 2" Longer than Standard and TK34 Internal Plastic Coating. Manufacturer is Texas Steel Conversion with Mill Certs



**4" DRILL PIPE**

**COMPLETE SUPPLY COMPANY FOR SALE. CALL FOR DETAILS!**  
**CONTACT DICK TURNER @ 903-721-0283**  
[dturner@cannonsalesinc.com](mailto:dturner@cannonsalesinc.com)



**CONTACT CRAIG CANNON**  
**@ 210-863-9603**  
[ccannon@cannonsalesinc.com](mailto:ccannon@cannonsalesinc.com)



**CORPORATE HEADQUARTERS ADDRESS: P.O. BOX 4038 • BERGHEIM, TEXAS 78004**  
**PHONE (830) 336-3983 • FAX (830) 336-3984 • [www.cannonsalesinc.com](http://www.cannonsalesinc.com)**